

MegaTrack

Technical Brochure



MegaTrack :
Control and **audit** your printing costs

MegaTrack is the easy way to monitor, allocate, and ultimately, optimize your printing costs. By monitoring local and remote print-servers it provides you with comprehensive real-time and statistical information on printer usage and the cost of printing-data that can be broken down according to groups, employees or printers. The end result is data you can use to optimize the cost-efficiency of your printing.

MegaTrack gathers, evaluates and presents the information you need to control your printing costs.

Examples of **information** gathered by MegaTrack:

- Graph of print job volume per hour/day/month/year
- Total Cost of Ownership of a printer
- List of all jobs printed through all print servers
- Cost of all jobs sent by a user to any printer
- Volume printed by a printer, volume printed by a group, a user ...
- Usage of economode, duplex
- Usage of color vs B&W on hp Laserjet 8550/4550/...
- Pie chart for allocation of print jobs amongst printers, company-wide ...

How MegaTrack **works?**

MegaTrack is based on 3 modules:

The MegaTrack Print-Server (MPS) that runs on as many local and remote NT/2000/XP print-servers as you want, to monitor all of the printers attached to them. The MPS scans the print jobs, and even queries the printer (SNMP connection), to compile detailed information on printer usage. The MPS supports the latest printer languages like Post-Script 3 and PCL 6 and gets from NT/2000 information on user name, group, domain ...

The next module is the central MegaTrack Database-Server software (MDS), which consolidates the information collected at the individual print-

servers. The Database could be a Microsoft SQL Server database or MSDE (SQL engine), which is included on the MegaTrack CD.

The MegaTrack Web-Server (MWS) then prepares detailed, customized reports, combining graphics and text that show you the composition of your printing costs. These statistics and reports can be accessed and administered from anywhere in your organisation, using a web-browser. They can also be exported into MS excel with only one click.

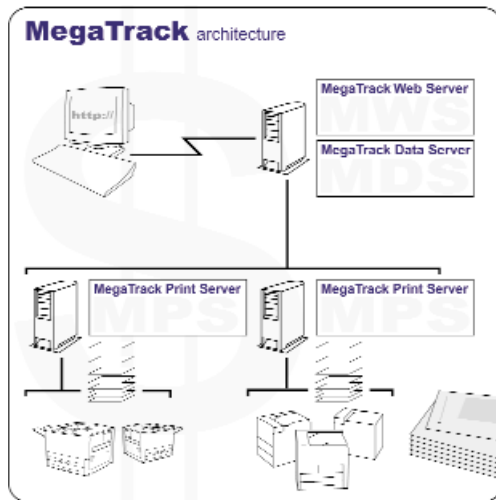




Easy installation and configuration

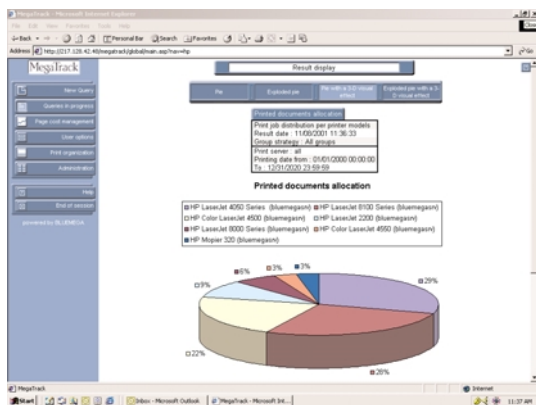
Once installed, MegaTrack will discover all the printers in your network. By analyzing the print jobs passing through your print-servers, the MPS calculates fine tuned cost per page based on printer, toner and media cost, depreciation time... Depending on the printer profile, you will be able to get accurate information on color, duplex, economode, etc, for each print job.

When implementing new printers on print-servers, MegaTrack will detect them automatically. What you only need to do is to assign your printer cost profiles to these new printers.



Optimize your printer usage

By connecting to MegaTrack via your web-browser or by simply receiving the information via your email, you will be able to take immediate decisions to optimize your printer usage:



MegaTrack Database-Server and Web-Server Minimum Requirements

- Pentium III 500MHz, 256MB RAM, 1536MB free hard disk space.
- Windows NT 4.0 SP4 or higher, or Windows 2000/XP
- Internet Explorer 4 SP2 or higher, Netscape 4.55
- Office 97/2000/XP
- IIS 4 or higher, SQL Server 7.0/2000 or MSDE database (MSDE is included on MegaTrack CD)

MegaTrack Print-Server Minimum Requirements

- Pentium II 400MHz, 128MB RAM, 512MB free hard disk space.
- Windows NT 4.0 SP4 or higher, Windows 2000/XP.

©2002 Bluemega. All designations and product names are trademarks or registered trademarks of the respective company. This document is non contractual. Specifications and descriptions can be modified by manufacturers at any time without prior notice. MTTBus/0302

MegaTrack features

- Accurate and comprehensive statistics to optimize printer deployment, workload and the purchase of printer consumables
- Web-based management / reporting
- Corporate-wide tracking on the intranet/extranet/internet
- Tracking function completely transparent to users
- Multi-currency management.
- Multi-language interface and reports: English, French, German, Spanish, Czech, Russian, Polish, Dutch

Architecture

- Distributed Architecture Technology causes negligible effects on printing speed and LAN bandwidth
- Controls multiple NT/2000/XP print-servers and unlimited number of printers
- Local printer tracking for NT/2000/XP workstations
- Macintosh workstation support (TCP/IP)

Reporting

- Statistics can be exported in MS Excel in one click
- Automatically receive reports via your email
- Accurate page information (media type and size, duplex, economode, color or B&W ...)
- Detailed cost analysis (number of B&W pages into a color document ...)
- Over 180 built-in reports
- Scheduled report generation

Printer connectivity

- TCP/IP networks supported
- Port monitors supported: Microsoft standard TCP/IP, hp Jetdirect, hp standard TCP/IP, LPR, Local port
- All PCL/PS printers supported
- SNMP support
- Optimized for use with hp LaserJet printers.
- hp MFP copy tracking functions with CreditJet module.

Add-on

(these elements included in MegaTrack Pro can be added separately to MegaTrack Lite)

- Automatically receive reports via your email
- Printer cost, media cost and printer templates
- 180 built-in reports
- SNMP support

